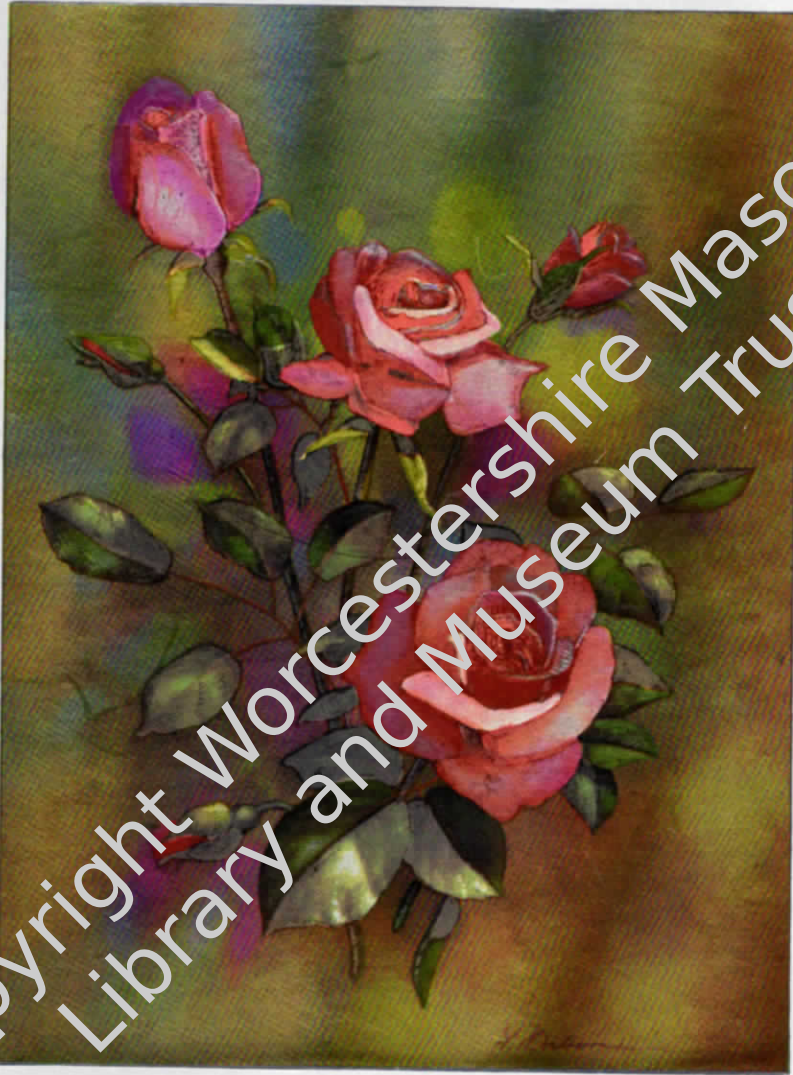


Woodlands Chapter No. 6116  
E. Comp. W. H. Cotton. M.E.Z.



## Ladies Evening

STECHFORD MASONIC HALL  
BODESLEY GREEN EAST, BIRMINGHAM.

SATURDAY, 19th MAY, 1984

*Your pleasure is ours this festive night,  
May the programme give you untold delight.*

**THE THREE PRINCIPALS AND THEIR LADIES**

E. Comp. W. H. COTON, M.E.Z. and Mrs. M. JENNINGS

E. Comp. M. E. NORMAN, H. and Mrs. NORMAN

R. N. CHILD, Acting J. and Mrs. CHILD

**OFFER YOU A VERY WARM AND SINCERE WELCOME**

---

**PROGRAMME**

Reception . . . . .	5.15 p.m.
Dinner . . . . .	5.45 p.m.
Dancing . . . . .	8.00 p.m.
Carriages . . . . .	11.45 p.m.

---

Music by  
**ARCHIPELAGO TRIO**

---

Director of Ceremonies for the Evening:  
E. Comp. F. H. Grant, B.E.M. P.P.G.Soj.

Copyright Worcestershire Masonic  
Library and Museum Trust

*A feast of joy attends the table,  
Shared with friends.*

**MENU**

—  
**Pate Maison**  
—

**Asparagus Soup**  
—

**Goujons of Plaice**  
—

**Roast of Prime Scotch Beef**  
—

**Horseradish Sauce**  
**Yorkshire Pudding**  
**Slice of Beans**  
—

**Cauliflower A La Creme**  
**Roast Potatoes**  
**Parsley Sauce**  
—

**Baked Alaska**  
—

**Selection from the Cheese Board**  
**Assorted Biscuits**  
—

**Fruit**  
—

**Coffee**  
—

**After Eight Mints**

*Now let us be merry  
we have healths to drink.*

*Henry VIII*

**TOASTS**

**THE QUEEN**

Proposed by ..... M.E.L.

**NATIONAL ANTHEM**



**THE LADIES**

Proposed by ..... Comp. N. J. H. Wellsbury

**THE LADIES SONG**

Sung by ..... E. Comp. G. A. Boughton, P.Prov.G.Organist

Response by ..... Mrs. M. Jennings



**THE THREE PRINCIPALS**

Proposed by ..... Comp. K. E. Hill  
Acting P.Soj.

Response by ..... E. Comp. W. H. Coton, M.E.Z.

Copyright Worcestershire Masonic Library and Museum Trust

*It's not so much what's on the table that matters,  
As what's on the chair.*  
W. S. Gilbert.

E. Comp. R. N. Child. . . . . I.P.Z.

**OFFICERS 1983/4**

E. Comp. W. H. Coton. . . . . M.E.Z.  
 E. Comp. M. E. Norman . . . . . H.  
 E. Comp. S. Birtwistle . . . . . J.  
 Comp. N. Edwards . . . . . S.E.  
 Comp. D. B. Carter . . . . . S.N.  
 Comp. S. W. Barnes. . . . . Treasurer  
 E. Comp. S. Spicer, P.Prov.G.Reg. . . . . D.C.  
 Comp. S. G. Baynam. . . . . P.Soj.  
 Comp. K. E. Hill . . . . . 1st Asst. Soj.  
 Comp. M. H. Anderson . . . . . 2nd Asst. Soj.  
 E. Comp. D. McKenzie, P.Prov.G.Reg. . . . . A.D.C.  
 Comp. J. L. Plumb . . . . . Asst. S.E.  
 Comp. N. J. H. Wellsbury . . . . . Steward  
 Comp. A. K. Wyer . . . . . Steward  
 Comp. D. E. Hopper . . . . . Steward  
 Comp. W. E. Partridge. . . . . Steward  
 Comp. C. E. Heydon . . . . . Steward  
 E. Comp. W. J. Ashley, P.P.G.Soj. (Warks) . . . . . Janitor  
 E. Comp. J. H. Bond, P.Prov.G.S.N. . . . . Organist

**Members**

E. Comp. E. N. Holden, P.E.Std.B.  
 E. Comp. N. F. Skan, P.A.G.D.C.  
 E. Comp. L. H. Pountney, P.G.Std.B.  
 E. Comp. A. E. Gaydon, P.Prov.G.S.N.  
 E. Comp. F. L. Collins, P.Prov.D.G.D.C.  
 E. Comp. A. T. Birch, P.Prov.A.G.D.C.  
 E. Comp. J. S. Harding, P.Prov.G.S.N.  
 E. Comp. R. J. Hollins, P.Prov.G.S.N.  
 E. Comp. E. T. Breakwell, P.Prov.G.Soj. (Warks)  
 E. Comp. W. Vaughan, P.Prov.G.Reg.  
 E. Comp. G. A. Boughton, P.Prov.S.Organist  
 E. Comp. F. H. Grant, B.E.M., P.P.G.Soj.  
 E. Comp. V. S. Cattermole, P.A.G.D.C., P.Prov.G.S.N.(Warks)  
 Comp. A. C. F. Hackett  
 Comp. A. V. Betts  
 Comp. Dr. H. W. C. Ward  
 Comp. J. A. Porter  
 Comp. C. F. Cantello  
 Comp. M. R. S. Thomas  
 Comp. W. E. Wainwright  
 Comp. P. W. Vaughan  
 Comp. C. T. Sainsbury  
 Comp. J. A. Mason  
 Comp. R. L. Amey  
 Comp. J. T. Gibson  
 Comp. R. J. Luckman  
 Comp. D. S. Mallett  
 Comp. E. Taylor  
 Comp. J. Cassells  
 Comp. D. E. Walker  
 Comp. L. F. Williams  
 Comp. G. H. Williamson  
 Comp. V. K. Clarke